



**ikio**  
LED LIGHTING

# BAA and BABAA Compliant Products

Explore our range of federally compliant products.



Manufactured by



[www.brightfutureusa.com](http://www.brightfutureusa.com)

## DELPHI

Back - Lit Panel Light  
1'x4' | 2'x2' | 2'x4'



### Power Selectable

- (1'x4') 20W - 30W - 40W
- (2'x2') 20W - 30W - 40W
- (2'x4') 30W - 40W - 50W

### CCT Selectable

3500K - 4000K - 5000K



## DELPHI

Architectural Troffer  
1'x4' | 2'x2' | 2'x4'



### Power Selectable

- (1'x4') 20W - 25W - 30W
- (2'x2') 20W - 25W - 30W
- (2'x4') 25W - 30W - 35W

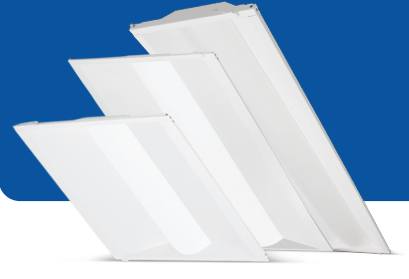
### CCT Selectable

3500K - 4000K - 5000K



## DELPHI

Retrofit Troffer  
1'x4' | 2'x2' | 2'x4'



### Power Selectable

- (1'x4') 20W - 25W - 30W
- (2'x2') 20W - 25W - 30W
- (2'x4') 25W - 30W - 35W

### CCT Selectable

3500K - 4000K - 5000K



## ORWIN

Downlight - 6" | 8" | 10"



### Power Selectable

- (6") 12W - 17W - 22W
- (8") 17W - 24W - 30W
- (10") 22W - 30W - 38W

### CCT Selectable

• 2700K - 3000K - 3500K - 4000K - 5000K



## T5 TUBE

Type B - 2' | 4'



### Power

7W | 15W | 24W

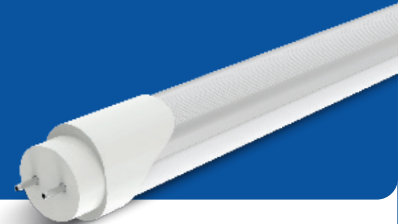
### CCT

4000K



## T8 TUBE

Type B - 2' | 3' | 4'



### Power

9W | 12W | 15W | 18W

### CCT

3000K | 3500K | 4000K  
4500K | 5000K



## SIGMA GEN2

T8 Emergency Tube  
Type B



Power

**15W**

CCT Selectable

4000K - 5000K



## APEX

Linear Low Bay



Power Selectable

**50W - 60W - 70W**

CCT Selectable

3000K - 4000K - 5000K



## AMPLIN GEN2

Linear High Bay



Power Selectable

- 75W - 100W - 150W
- 100W - 150W - 200W
- 200W - 240W - 300W

CCT Selectable

5000K

Fixed Wattage Option Available - "Amplin Linear High Bay"



## UPSTAR

Round High Bay



Power Selectable

**100W - 150W - 200W - 240W**

CCT Selectable

3500K - 4000K - 5000K



## AREON

Area Luminaire



Power Selectable

- 70W - 100W - 150W
- 150W - 200W - 240W - 300W

CCT Selectable

3000K - 4000K - 5000K



## EDIN

Wall Pack (Semi Cutoff)



Power Selectable

- 30W - 40W - 50W - 60W
- 70W - 85W - 100W - 120W

CCT Selectable

3000K - 4000K - 5000K





# BAA and BABAA Guidance

Everything You Need to Know About Domestic Procurement Regulations and Achieving Federal Compliance

Projects funded by federal, state, or municipal entities are mandated to use domestic products that comply with the Buy American Act (BAA) or the Build America, Buy America Act (BABAA) standards. For compliance, a specific percentage of a product’s components must be of U.S. origin—65% for BAA and 55% for BABAA as of 2024. These provisions are particularly relevant for LED lighting projects seeking eligibility for federal funding.

## Key Compliance Insights

### Buy American Act (BAA)

Projects funded by federal, state, or municipal entities are mandated to use domestic products that comply with the Buy American Act (BAA) or the Build America, Buy America Act (BABAA) standards. For compliance, a specific percentage of a product’s components must be of U.S. origin—65% for BAA and 55% for BABAA as of 2024. These provisions are particularly relevant for LED lighting projects seeking eligibility for federal funding.

### Build America, Buy America Act (BABAA)

BABA, enacted as part of the Infrastructure Investment and Jobs Act (IIJA) of 2021, established procurement preferences for federal infrastructure projects. It requires domestic components to make up a certain percentage of the total cost for federal funding eligibility, with a focus on three categories: iron or steel products, construction materials, and manufactured goods, including LED lighting.

Aspect	Buy American Act (BAA)	Build America, Buy America Act (BABAA)
Enactment	1933	2021 <sup>(1)</sup>
Scope of Application	Direct Federal Procurements	Federally Funded Infrastructure Projects
Domestic Content Requirement	65% As of 2024 <small>*Projected increase: 75% by 2029</small>	Category-Specific Thresholds <sup>(2)</sup>
Product Categories Covered	End Products & Construction Materials <sup>(3)</sup>	Iron, Steel, Construction Materials & Manufactured Goods
Federal Regulatory Authorities	FAR & DFARS	OMB, MIAO & Agencies Distributing Federal Funds
Waivers	Allowed <sup>(4)</sup>	Allowed But Are Less Common <sup>(5)</sup>
Exceptions	Certain Trade Agreements & Small Procurements	Small Components or Limited Domestic Items <sup>(6)</sup>

Notes :

- 1. The Build America, Buy America Act (BABAA) was enacted as part of the Infrastructure Investment and Jobs Act (IIJA) in November 2021.
- 2. Mandates that all iron, steel, manufactured products, and construction materials used in infrastructure projects must be US produced. Compliance thresholds vary by product category, but the overarching requirement is maximum domestic sourcing.
- 3. Focuses on end products and construction materials, such as steel and iron for public construction projects.
- 4. Waivers under certain conditions, such as public interest, unavailability, or excessive cost. They are granted when adherence to BAA seems impractical.
- 5. Waivers are less common and subject to stricter scrutiny. Requires public posting and detailed justification, ensuring exceptions are made only when necessary.
- 6. Exemptions are allowed for small components or items not available domestically in sufficient quantity, but they are carefully regulated.